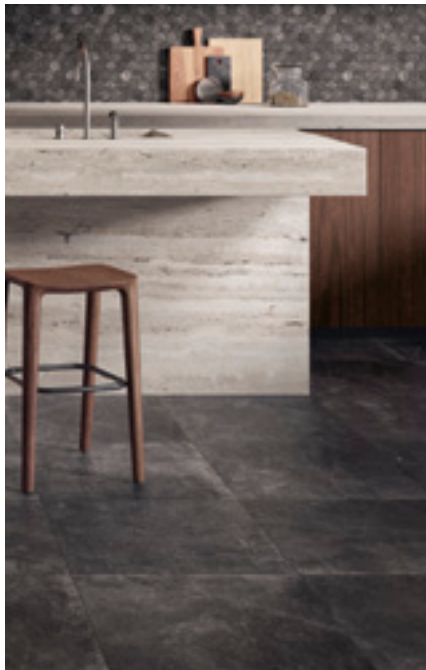


# PANAREA



**Verde**  
**1999**<sup>®</sup>  
AN ITALIAN STORY



Stories of daily life shaded by the volcano

# PANAREA

Colors and inspirations narrated by

**Verde**  
**1999**<sup>®</sup>  
AN ITALIAN STORY

An air of crisp elegance  
evoking nature's  
creative strength.



SAND 50x100 . 20"x40" rett



## PANAREA

A handful of volcanic islands in the heart of the Mediterranean give impulse to a stone look with true character. Panarea expresses the charm of lava stone through an exciting and complete ceramic collection: four shades ranging from a vivid ash gray to a sophisticated slate black, seven different sizes, two thicknesses for indoor and outdoor installations, and an amazing array of mosaics blending the different colors in the line.

SAND 100x100 . 40"x40" rett R11  
SAND 30x60 . 12"x24" rett  
SAND 100x100 . 40"x40" rett R11 2 cm



GREY 50x100 . 20"x40" rett  
WHITE FRECCIA 37,5x33,3 . 13½"x14¾"





## PANAREA

Slight shade variation from tile to tile lends personality and natural movement. Multi-color mosaics evoke a typically Italian decorative tradition.

GREY 60x60 . 30"x30" rett  
CASSETTONE GREY 39x39 . 15½"x15½"



MOSAICO DECORATO 30x30 . 12"x12"  
GREY 60x60 . 24"x24" rett



WHITE 100x100 . 40"x40" rett R11 2 cm  
WHITE 50x100 . 20"x40" rett R11 2 cm  
WHITE 100x100 . 40"x40" rett





WHITE 50x100 . 20"x40" rett R11 2 cm  
BASKETWAVE BLACK 31,2x31,2 . 12¼"x12¼"



A drop of veining here  
and there combined with  
interwoven fine lines create an  
authentic and unmistakable  
stone look.

WHITE 100x100 - 40"x40" rett



BLACK 60x60 . 24"x24" rett  
HEXAGON BLACK 29,3x29,4 . 11½"x11½"



PANAREA

The mixing of timeless colors for an elegant and refined look.

BLACK FRECCIA 37,5x33,3 . 13 $\frac{1}{2}$ "x14 $\frac{1}{4}$ "

Elegance and the brute force  
of nature in perfect  
harmony.

BLACK 60x60 . 24"x24" rett



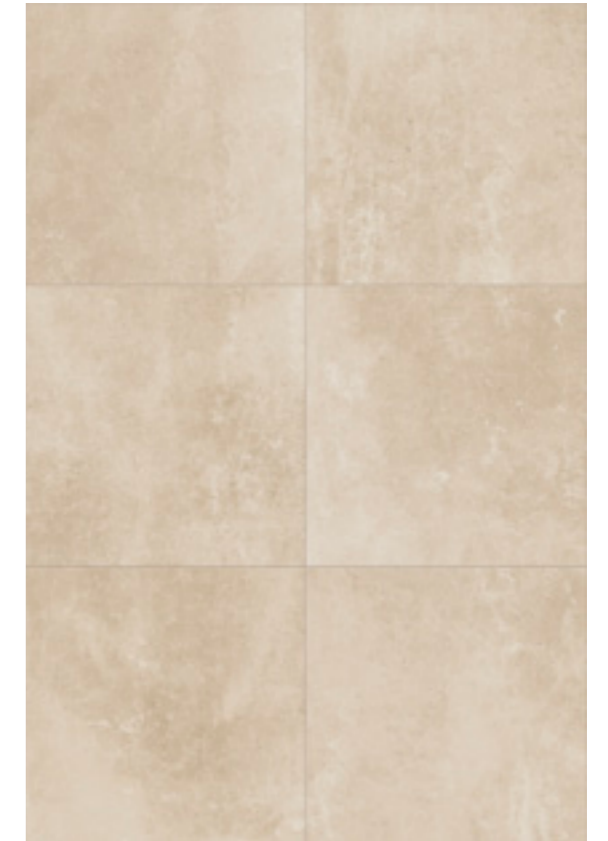
BLACK



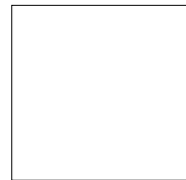
GREY



WHITE



SAND



100x100 . 40"x40" rett  
 BLACK  
 GREY  
 WHITE  
 SAND

100x100 . 40"x40" rett R11  
 GREY  
 WHITE  
 SAND



50x100 . 20"x40" rett  
 BLACK  
 GREY  
 WHITE  
 SAND



60x60 . 24"x24" rett  
 BLACK  
 GREY  
 WHITE  
 SAND



30x60 . 12"x24" rett  
 BLACK  
 GREY  
 WHITE  
 SAND



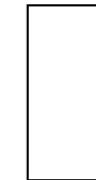
30x30 . 12"x12" rett  
 BLACK  
 GREY  
 WHITE  
 SAND



30,4x60,8 . 12"x24"  
 BLACK  
 GREY  
 WHITE  
 SAND



100x100 . 40"x40" rett R11  
 BLACK  
 GREY  
 WHITE  
 SAND



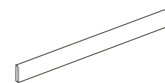
50x100 . 20"x40" rett R11  
 BLACK  
 GREY  
 WHITE  
 SAND



7,5x30 . 3"x12" rett  
 BLACK  
 GREY  
 WHITE  
 SAND



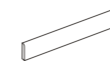
7,5x15 . 3"x6" rett  
 BLACK  
 GREY  
 WHITE  
 SAND



Battiscopa 7x100 . 2 3/4"x40" rett  
 BLACK  
 GREY  
 WHITE  
 SAND

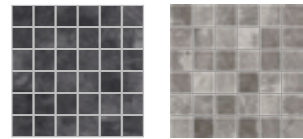


Battiscopa 7x60 . 2 3/4"x24" rett  
 BLACK  
 GREY  
 WHITE  
 SAND



Battiscopa 7x60,8 . 2 3/4"x24"  
 BLACK  
 GREY  
 WHITE  
 SAND

MOSAICO 30x30 . 12"x12"



BLACK GREY

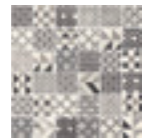


WHITE SAND



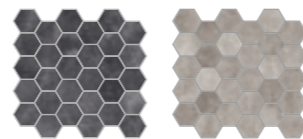
Mosaico  
 30x30 . 12"x12" rett  
 5x5 . 2"x2"  
 BLACK  
 GREY  
 WHITE  
 SAND

MOSAICO DECORATO 30x30 . 12"x12"

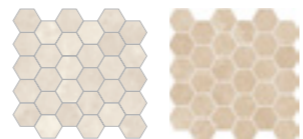


Centuries/Panarea  
 Mosaico Decorato  
 30x30 . 12"x12" rett  
 5x5 . 2"x2"

HEXAGON 29,3x29,4 . 11½"x11½"



BLACK GREY

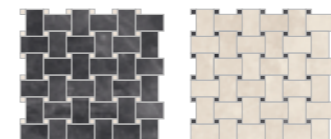


WHITE SAND

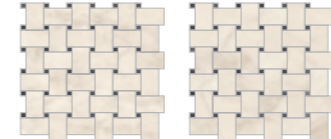


Hexagon  
 29,3x29,4 . 11½"x11½"  
 BLACK  
 GREY  
 WHITE  
 SAND

BASKETWEAVE 31,2x31,2 . 12¼"x12¼"



BLACK WHITE/BLACK

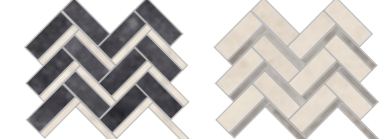


ANTIQUE PISA ANTIQUE FLORENCE

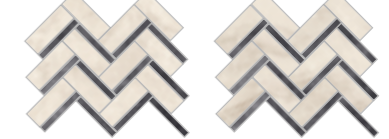


Basketweave  
 31,2x31,2 . 12¼"x12¼"  
 BLACK (BLACK/ANTIQUE PISA)  
 WHITE (WHITE/BLACK)  
 ANTIQUE PISA (ANTIQUE PISA/BLACK)  
 ANTIQUE FLORENCE  
 (ANTIQUE FLORENCE/BLACK)

FRECCIA 37,5x33,3 . 13⅞"x14¼"



BLACK WHITE



ANTIQUE PISA ANTIQUE FLORENCE

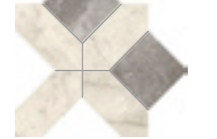


Freccia  
 37,5x33,3 . 13⅞"x14¼"  
 BLACK (BLACK/ANTIQUE PISA)  
 WHITE (WHITE/GREY)  
 ANTIQUE PISA (ANTIQUE PISA/BLACK)  
 ANTIQUE FLORENCE  
 (ANTIQUE FLORENCE/BLACK)

CASSETTONE 39x39 . 15⅝"x15⅝"



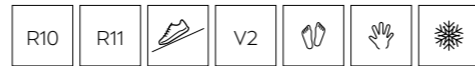
BLACK



GREY



Cassettone  
 39x39 . 15⅝"x15⅝"  
 BLACK (ANTIQUE PISA/BLACK)  
 GREY (ANTIQUE PISA/GREY)



Packing

	pezzi pieces	m <sup>2</sup>	kg	kg	box	m <sup>2</sup>
100x100 . 40"x40" rett	2	2,00	38,63	927,12	24	48,00
100x100 . 40"x40" 2 cm rett	1	1,00	43,90	921,90	21	21,00
50x100 . 20"x40" rett	2	1,00	19,32	927,12	48	48,00
50x100 . 20"x40" 2 cm rett	1	1,00	21,95	921,90	42	21,00
60x60 . 24"x24" rett	3	1,08	20,92	1004,16	48	51,84
30x60 . 12"x24" rett	7	1,26	24,30	972,00	40	50,40
30x30 . 12"x12" rett	11	0,99	16,09	772,32	48	47,52
7,5x30 . 3"x12" rett	17	0,38	7,53	632,52	84	31,92
7,5x15 . 3"x6" rett	50	0,57	11,05	839,80	76	43,32
30,4x60,8 . 12"x24"	6	1,11	24,30	972,00	40	50,40
30x30 . 12"x12" Mosaico	8	0,72	13,72	576,24	42	30,24
30x30 . 12"x12" Mosaico Decorato	8	0,72	13,72	576,24	42	30,24
29,3x29,4 . 11½"x11½" Hexagon	8	0,63	12,33	517,86	42	26,46
31,2x31,2 . 12¼"x12¼" Basketweave	8	0,78	14,84	623,28	42	32,76
37,5x33,3 . 13⅞"x14⅞" Freccia	8	0,60	12,33	517,86	42	25,20
39x39 . 15½"x15½" Cassettone	8	0,72	13,72	576,24	42	30,24
7x60 . 2¾"x24" Battiscopa rett	15		11,90	476,00	40	
7x100 . 2¾"x40" Battiscopa rett	6		8,64	362,88	42	
7x60,8 . 2¾"x24" Battiscopa	15		11,90	476,00	40	

FULL BODY PORCELAIN STONEWARE - UGL  
Gres porcellanato a tutta massa . Grès cérame pleine masse . Vollmassefeinsteinzeug



Via Ghiarola Nuova, 158  
41042 Fiorano Modenese,  
Modena - Italy  
tel +39 0536 832393  
fax +39 0536 913591  
**verde1999.com**  
info@verde1999.com

is a brand of  
Gruppo Romani S.p.A. Industrie Ceramiche

TECHNICAL FEATURES\*

Caratteristiche tecniche  
Caractéristiques techniques  
Technische eigenschaften

FULL BODY PORCELAIN STONEWARE - ISO 13006 BIA UGL  
Gres porcellanato a tutta massa . Grès cérame pleine masse . Vollmassefeinsteinzeug

	NORME TEST N°	DESCRIZIONE DESCRIPTION	VALORE A NORMA REQUIRED STANDARD	VALORE RESULTS
	ISO 10545/2	Lunghezza e larghezza Length and width Longueur et largeur Länge und breite	± 0,5%	Conforme Conforms
	ISO 10545/2	SPESSORE THICKNESS ÉPAISSEUR STÄRKE	± 5%	Conforme Conforms
	ISO 10545/2	Ortogonalità Wedging Orthogonalité Rechtwinklichkeit	± 0,5%	Conforme Conforms
	ISO 10545/2	Planarità Warpage Planéité Ebenflächigkeit	± 0,5%	Conforme Conforms
		Variazioni di tono Shade variations Variations de nuance Tonvariationen		 LIEVE VARIAZIONE SLIGHT VARIATION LEGERE VARIATION GERINGE ABWEICHUNG
	ISO 10545/3	Assorbimento d'acqua Water absorption Absorption d'eau Wasseraufnahme	≤ 0,5%	Conforme Conforms
	ISO 10545/4	Resistenza alla flessione Bending strength Resistance a la flexion Biegefestigkeit	R > 35 N/mm <sup>2</sup>	Conforme Conforms
	ISO 10545/11	Resistenza al cavillo Crazing resistance Resistance au trassailage Haarrissfestigkeit		Resiste Resistant Résiste Beständig
	ISO 10545/13	Resistenza all'attacco chimico Chemical resistance Resistance à l'attaque chimique Fähig gegen säuren und laugen	min. gb	Classe A-LA-HA Class A-LA-HA Classe A-LA-HA Gruppe A-LA-HA
	ISO 10545/14	Resistenza alle macchie Stain resistance Resistance aux taches Fleckenfestigkeit	min 3	Classe 5 Class 5 Classe 5 Gruppe 5
	ISO 10545/12	Resistenza al gelo Frost resistance Resistance au gel Frostbeständigkeit		Resiste Resistant Résiste Beständig
	ISO 10545/6	Resistenza alla abrasione della superficie di piastrelle smaltate Resistance to surface abrasion of glazed tiles Résistance à l'abrasion de la surfacedes carreaux émaillés Widerstand gegen Abrieb der Oberfläche der glasierten Fliesen	≤ 175 mm <sup>3</sup>	≤ 175 mm <sup>3</sup>
	B.C.R.A. REP. CEC.6/81 DIN 51130 DIN 51097 BOT 3000 DCOF	Resistenza alla scivolosità. Coefficiente di attrito medio Skid resistance. Average coefficient of friction Résistance au glissement. Coefficient de frottement moyen Rutschfestigkeit. Mittlerer Reibungswert	B.C.R.A. REP. CEC. 6/81 DIN 51130 DIN 51097	0,40 ≤ μ ≤ 0,74 R10 R11 Classe B Class B Classe B Gruppe B Classe C Class C Classe C Gruppe C
		Resistenza della superficie (scala MOHS) Scratch hardness (MOHS scale) Dureté de la surface (échelle MOHS) Oberflächenhärte (MOHS skala)	EN 101	≥ 6

\* THESE VALUES MAY VARY FROM LOT TO LOT.



**Verde**  
**1999**<sup>®</sup>  
AN ITALIAN STORY